



PRODUCT INFORMATION SHEET

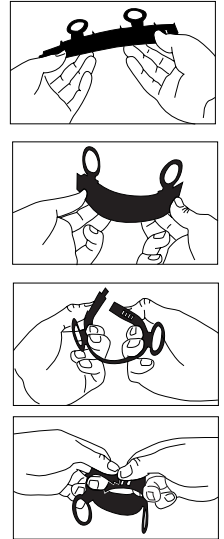
INSTRUCTIONS

The Alligetter™ is designed to retrieve items that have fallen into the garbage disposal, though it is not limited to this one task. When used with a disposal, a device to spread the rubber flaps has been included.

ASSEMBLY AND USE OF FLAP SPREADER

1. Assemble flap spreader by inserting the tap into the hole as shown in diagram 1.
2. Some disposals don't have rubber flaps so the flap spreader would not be needed in this case.
3. Some disposals have removable flaps which gives the user the option of removing the flaps or using the flap-spreader to gain access to the disposal.
4. The flap spreader has several size options depending on if you have removable flaps or not. Use whichever hole size works best for your disposal.
Note: View and access are limited if removable flaps are not taken out when using the Alligetter™.

Diagram 1

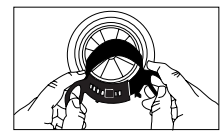


USE AND CARE OF THE ALLIGETTER™

Step 1

Insert flap spreader, as shown in diagram 2, deep enough to seat the unit. In most cases the tabs that stick out from the flap spreader will contact the rubber flaps or sink indicating proper depth.

Diagram 2



Step 2

In the stored position, the Alligetter's™ handle is folded shut and the light is off. Unfold the handle by gently pulling and rotating it away from the main body of the Alligetter™ until the handle clicks into the locked position. Lightly press and release the button on the back of the battery pack to turn the light on. Grasp the Alligetter™ with a finger in the trigger loop, insert the tip into the disposal and search for the item that needs removing. Once the item has been found simply grasp it by pulling the trigger and allowing the jaws to close on the item. Repositioning items using the Alligetter™ tip can make grabbing difficult things easy.

Step 3

After removing the foreign object from the disposal grasp the handles of the flap spreader and lift straight up to remove.

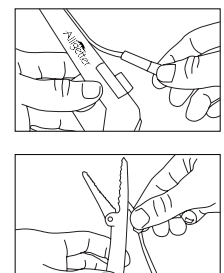
Step 4

Most of the time the tip can simply be rinsed under warm water and then stored (Step 6).

Step 5 (optional-to be used if the tip requires cleaning)

If the tip is dirty and requires cleaning, the light needs to be removed, as shown in light removal diagram 3. To remove the light simply pull the battery pack off of its holder and continue to pull until all of the cord connecting the battery pack with the LED in the tip is out of the groove. Then pull on the rear part of the LED holder that is attached to the other end of the white cord rotating it forward and once the rear is separated from the main body simply pull light up and out. Now that the light is out, the unit can be cleaned using a brush and soap. Once the Alligetter™ is rinsed and dried the light can be reattached by inserting the LED end of the light holder into the opening, slide light towards tip and push rear down until the light holder is clipped in. Now press the white connecting cord into the groove and snap the battery pack back into its holder on top of the Alligetter.™

Diagram 3



Step 6

The handle can now be put back into the storage position, by lightly pulling back on the tab located in the back of the handle while applying light pressure on the handle in the direction of the tip. Rotate the handle until it is parallel with the main shaft of the Alligetter™ and the tip is closed. The Alligetter™ can be stored in the a drawer or under the kitchen sink

BATTERY REPLACEMENT

The Alligetter™ uses four AG3 batteries which are commonly found at hardware, drug stores or on our website (www.alligetter.com) or at participating retailers who sell our products. For ease of use and cost savings we recommend you use our shrink-wrapped battery packs. The insulating layer on the batteries that came with the Alligetter™ can be reused. To replace batteries, remove the light assembly as seen in diagram 3. Unscrew the center of the battery pack keeping the switch side up so the old batteries don't fall out. Observe the orientation of the batteries before removing them. You will see that the (+) positive side of the batteries is what comes in contact with the spring. The old battery pack should slide out easily. Replace with new battery pack or empty out old batteries from the reusable shrink-wrapped insulation and replace with new ones making sure that each battery **has the positive side facing the spring**. After replacing the battery pack, reassemble and test light. If light doesn't work go back and check the orientation of the batteries to make sure they are all facing the same direction and that the pack is properly oriented. If the light still doesn't work, remove the batteries and call our help line or look on our website for recommendations.

WARRANTY

This product is warranted against manufactured defects for ninety (90) days. Should you have any questions regarding your product, please call 215-337-4264.



www.alligetter.com